

# NEW CORSAVAN

2016 Models Edition 1



# The Wheels of Business. Helping you deliver.

Whatever your line of business, Vauxhall Commercial Vehicles can help you deliver. With four different award-winning models – New Corsavan, Combo, Movano and Vivaro – we offer a massive choice of over 340 variants including panel vans, chassis cabs, crew

cabs, platform cabs, tippers, dropsides, box vans and passenger carriers. We're also committed to keeping your business moving. That means reliable, fuel-efficient vehicles – including our new ecoFLEX range – supported by a dedicated network of over 400 retailers

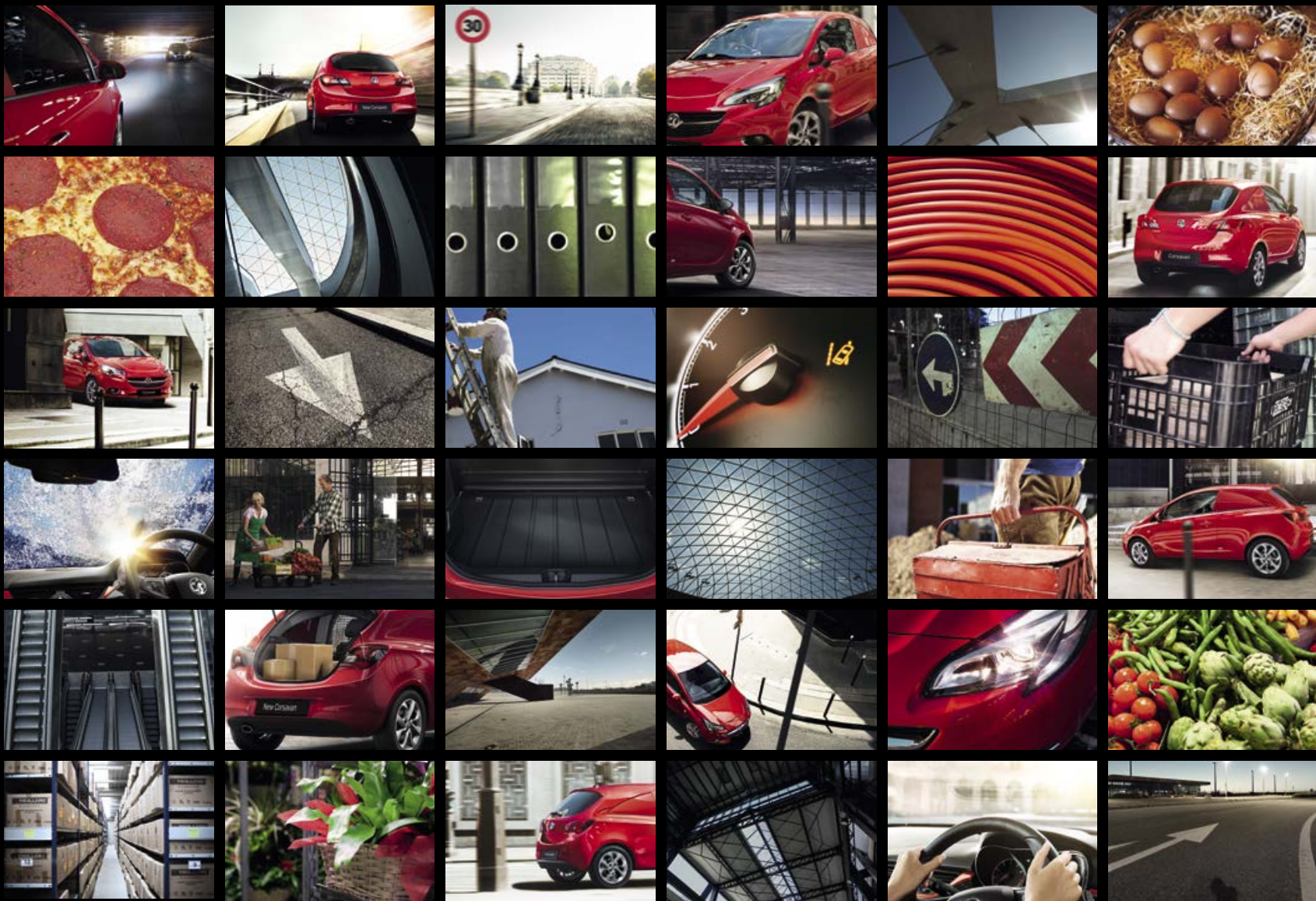




offering the expert support and back-up you need. We build more commercial vehicles at our British production facilities than any other UK manufacturer – indeed, almost 44,000 vans were built in the UK in 2014 alone. We've also won over 30 industry awards since

2010 – major awards, presented by some of the toughest judges in the business. Introduce the in-built reassurance of the Vauxhall brand and it's easy to see why Vauxhall Commercial Vehicles really are 'The Wheels of Business'.







# NEW CORSAVAN. THE SMALL VAN THAT GIVES YOU MORE.

An impressive redesign of its award-winning predecessor, the New Corsavan is now more stylish and capable for your business than ever.

Its sharp new exterior projects a dynamic business image, and its high-class ergonomic interior is packed with innovative features like touch-screen infotainment, Bluetooth® connectivity and heated windscreen, to make your daily drive more enjoyable.

The New Corsavan is powered by an impressive range of new fuel-efficient engines, with active safety systems and six airbags fitted as standard. An improved payload of up to 581kg ensures it can deliver the goods too.

In every way, New Corsavan is the perfect small van – that gives you more than ever before.

Some of the vehicles shown include options and accessories available at extra cost. And not all of the features, options or accessories described are available on every model. So please check the Equipment and Technical Data section for further details. From time to time we may also offer alternative models such as Special Editions which are featured in separate literature or can be found on the Vauxhall website: [www.vauxhall.co.uk/vans](http://www.vauxhall.co.uk/vans)

## CONTENTS

### NEW CORSAVAN

Loadspace	6
Interior comfort	8
Dynamics and efficiency	10
Corsavan	12
Corsavan Sportive	14
Options	16
Accessories	17
Exterior colours	18
Interior trims	19
Equipment	20
Technical data	24



# LOADS MORE EASY

Designed for hard working businesses everywhere, the New Corsavan is now even easier to load.

The tailgate opens high to give you plenty of headroom, yet drops down for a conveniently low loading height – it also features interior handles to make pulling the tailgate down easier too.

Payload is increased in the New Corsavan, building on the strong foundations of its predecessor to give you a maximum carrying weight of 581kg. Load floor length is an accommodating 1257mm, while the loadspace volume is a generous 0.92 cubic metres.



**1. Load protection.** A sturdy half-height steel bulkhead, tough sidewall half-height panelling and load restraint lashing eyes help protect against heavy, shifting loads. And an upper load restraint mesh and rubber floor mat (pictured above) are available as extra cost options.

**2. Load area storage.** A handy four-part load compartment cover is also available as an extra cost option.



# INTERIOR COMFORT

Whatever your business, New Corsavan is ready to provide a safe, easy and comfortable journey with a full range of interior features.

The New Corsavan cabin features sharp and distinctive styling together with improved driver switchgear and seat design for increased comfort and durability. In addition, ambient lighting and reduced levels of noise and vibration further improve the workday experience, whatever your trade. And when it comes to cabin clutter, New Corsavan has everything well organised with a range of smart and handy storage ideas for both the cabin and the load area.

As well as the usual creature comforts like electric windows, door mirrors and remote central deadlocking, both models feature digital radio, USB and Bluetooth® connectivity. Sportive models really turn it on with sports-style seats, a heated windscreen and air conditioning – you can even equip New Corsavan with the added convenience of electronic climate control as an affordable option.



**1. Bluetooth® connectivity and digital radio.** New Corsavan doesn't just work hard, it plays hard too. As well as the usual CD player and stereo radio, it's kitted out for you to connect all the media in your smartphone, MP3 player or tablet using the aux-in socket, USB or Bluetooth® for hands-free connectivity and music streaming. Digital radio means a broader range of channels with easier tuning and crystal clear sound.

**2. IntelliLink infotainment.** Designed to work without a CD player, the optional IntelliLink system features a touch-screen interface that lets you access your smartphone functions, device media and built-in apps like BringGo navigation, Stitcher™ and TuneIn Radio, giving you access to satellite navigation and thousands of internet radio stations.

**3. Banish winter blues.** Ice and condensation melt away with the heated windscreen. Standard on Sportive models.

**4. Storage spaces.** New Corsavan provides plenty of handy storage spaces too, including a centre console with drink holder and large door pockets (big enough for a 1.5-litre bottle) with specialised compartments for mobile phones and all those essential odds and ends.





# ENGINES AND DRIVING DYNAMICS

Now delivering even greater engine efficiency and driving agility. New Corsavan comes with a new range of Euro 6 compliant engines, including one petrol and three powerful turbo diesel units that add up to some serious cost savings. Which means New Corsavan now makes more business sense than ever.

## Engine efficiency

Featuring a new turbocharger design that achieves higher torque from lower revs, the new ecoFLEX 1.3CDTi 95PS Start/Stop engine boasts 85.6mpg on the combined cycle, with CO<sub>2</sub> emissions as low as 84g/km.

The Sportive 1.3CDTi 95PS Start/Stop engine is improved too, with 74.3mpg on the combined cycle (up from 64.2mpg), with CO<sub>2</sub> emissions down from 115g/km to 101g/km.

## Driving agility

Of course New Corsavan is a joy to drive too, with electrically powered steering and a totally redesigned chassis for a smooth, superior ride that makes the working day less stressful.

A new speed-sensitive electric power steering system features City Mode – which boosts power assistance for easier parking and manoeuvrability. At the same time, suspension modifications optimise steering for a more responsive feel.

In addition, the Easytronic transmission is now also available with the 1.3CDTi 95PS Start/Stop ecoFLEX diesel.



- 1. City Mode.** Specially developed for New Corsavan's electric power steering system, City Mode lightens the steering for easier parking and manoeuvrability in tight situations.
- 2. Front camera system.** This clever safety technology reads and alerts you to traffic signs before you do, warns if you drift from your lane or approach vehicles in front too fast – it even helps you keep your distance too.
- 3. Rear-view camera and rear parking distance sensors.** Mounted in the tailgate, the optional rear-view camera gives a wide viewing angle of the area behind the vehicle displayed on the infotainment system screen, while optional parking distance sensors alert you to the proximity of objects to the rear bumper.
- 4. Easytronic transmission.** Easytronic offers all the main features and flexibility of a regular automatic plus the performance and control of a 'one-touch' manual gearbox. Available as an extra cost option on standard Corsavan models



## ENGINES AND TRANSMISSIONS

	Maximum power	Maximum torque	Fuel economy mpg (litres/100km)#			CO <sub>2</sub> emissions (g/km)
			Urban driving	Extra-urban driving	Combined figure	
Petrol						
1.2i 70PS	70PS (51kW) @ 5600rpm	115Nm (85 lb.ft) @ 4000rpm	42.2 (6.7)	61.4 (4.6)	52.3 (5.4)	126
Diesel						
1.3CDTi 75PS Start/Stop	75PS (55kW) @ 3750rpm	190Nm (140 lb.ft) @ 1500-2500rpm	61.4 (4.6)	85.6 (3.3)	74.3 (3.8)	100
1.3CDTi 95PS Start/Stop ecoFLEX	95PS (70kW) @ 3750rpm	190Nm (140 lb.ft) @ 1500-3500rpm	76.3 (3.7)	94.2 (3.0)	85.6 (3.3)	87
1.3CDTi 95PS Start/Stop ecoFLEX Easytronic	95PS (70kW) @ 3750rpm	190Nm (140 lb.ft) @ 1500-3500rpm	83.1 (3.4)	94.2 (3.0)	88.3 (3.2)	84
1.3CDTi 95PS Sportive Start/Stop	95PS (70kW) @ 3750rpm	210Nm (155 lb.ft) @ 1500-3000rpm	62.8 (4.5)	83.1 (3.4)	74.3 (3.8)	101

#Official Government Test Environmental Data. Official EU-regulated test data is provided for comparison purposes and actual performance will depend on driving style, road conditions and other non-technical factors.





*Flame Red solid point.*



# CORSAVAN

## Standard features include:

- Tyre pressure monitoring system
- Electronic Stability Programme with traction control
- Hill start assist
- Anti-lock Braking System
- Daytime running lights
- Six airbags
- Electronic engine deadlock immobiliser
- CD/MP3 CD player/stereo radio with aux-in socket
- Digital radio
- Bluetooth® hands-free mobile phone connectivity
- Music streaming via Bluetooth®
- USB connection with iPod control
- Steering wheel mounted audio controls
- Steering column adjustable for reach and rake
- Speed-sensitive power-assisted steering
- Remote control central deadlocking
- Electrically operated windows
- Electrically adjustable door mirrors
- 14-inch steel wheels (petrol models)
- 15-inch steel wheels (diesel models)
- Full-size steel spare wheel

## Engine availability

1.2i 70PS

1.3CDTi 75PS Start/Stop

1.3CDTi 95PS Start/Stop ecoFLEX

1.3CDTi 95PS Start/Stop ecoFLEX Easytronic



Model illustrated features air conditioning, optional at extra cost.



1. 14-inch steel wheels with flush covers (petrol models).
2. 15-inch steel wheels with flush covers (diesel models).



*Sovereign Silver two-coat metallic paint.*



# SPORTIVE

## Additional features over and above Corsavan:

- Heated windscreen
- Rain-sensitive windscreen wipers
- Automatic lighting control
- Electro-chromatic anti-dazzle rear-view mirror
- Air conditioning
- Cruise control with speed limiter
- Sports-style seats
- Leather-covered steering wheel
- Driver's seat height adjuster
- Electrically heated door mirrors
- LED daytime running lights
- Body-colour exterior door handles
- 16-inch alloy wheels
- Front fog lights with chrome-effect surround
- Space-saver spare wheel

## Engine availability

1.3CDTi 95PS Start/Stop



Model illustrated features electronic climate control and rear parking distance sensors, optional at extra cost.



1. 16-inch alloy wheels.

2. 16-inch black alloy wheels (optional at extra cost).

# MAKE IT YOUR OWN

New Corsavan gives you plenty of options and packs to make it work even better for you.

As well as the IntelliLink infotainment system, Technical Pack, Winter Pack and electronic climate control, further options include:

- Load area rubber floor mat
- Upper load restraint mesh
- Cargo net
- Fixings for cargo net
- Load compartment cover
- Easytronic transmission
- Rear parking distance sensors
- Rear-view camera (Sportive)
- 16-inch black alloy wheels (Sportive)



**1. IntelliLink.** Compatible with Apple and Android systems, this touch-screen based infotainment system is designed to connect Bluetooth® and USB devices to share apps and content from your smartphone or MP3 player.

**2. Technical Pack.** Helping drivers to keep safe on the road, this pack includes forward collision alert, traffic sign recognition, lane departure warning, following distance indicator and electro-chromatic anti-dazzle rear-view mirror.

**3. Winter Pack.** Making the colder months more bearable for drivers, this pack includes electrically heated seats and an electrically heated leather-covered steering wheel.

**4. Electronic climate control.** Incorporating air conditioning, New Corsavan's electronic climate control is a sensor-controlled, single-zone, fully automatic system that can set and hold the desired cabin temperature.



**1. Base carrier.** Our roof rack system starts off with this base carrier, and can be complemented by two T-track bars – the system also works with a range of Thule attachments.

**2. Detachable tow bar.** Comes complete with 13-pin electrics and is easily mounted and detached.



**3. Mudflaps.** A smart appearance is important to business, so New Corsavan's accessory mudflaps help protect the vehicle's paint and bodywork.

**4. Rubber floor mats.** A pair of hardwearing, non-slip rubber mats help protect the New Corsavan's interior floor from everyday wear and tear.

# ACCESSORIES

With all the big stuff taken care of, the little things make a real difference to your driving experience. Fitted by trained Vauxhall professionals, Genuine Vauxhall Accessories allow you to get more out of your working day.

All are designed and specified to the same exacting standards as the New Corsavan, and all come with a comprehensive warranty.

## Other accessories include:

### Interior

- Floor mats
- Seat covers

### Safety

- First aid kit
- Warning triangle
- Hi-visibility vest

### Security

- Steering wheel security bar

### Practical

- Spare bulb kit
- Fuel can
- Stretch tow rope
- Jump leads
- Fire extinguisher (1kg or 2kg)
- Temporary tyre inflation kit

### Audio and navigation

- Smartphone and tablet docking stations

### Audio accessories

- Portable CD storage bag
- Portable CD storage box
- Sunvisor CD storage

### Towing

- Fixed or detachable tow bar
- Towing electrics (7-pin or 13-pin)
- Towing electrical adaptors (7/13-pin or 13/7-pin or 12S adaptor)



# EXTERIOR COLOURS

Stylish colour finishes for every type of business, in solid, two-coat metallic and two-coat pearlescent options.

## SOLID



Flame Red



Summit White



Royal Blue

## TWO-COAT METALLIC\*



Carbon Flash



Shiny Rock



Sovereign Silver

## TWO-COAT PEARLESCENT\*



Asteroid Grey



Dark Sea Blue

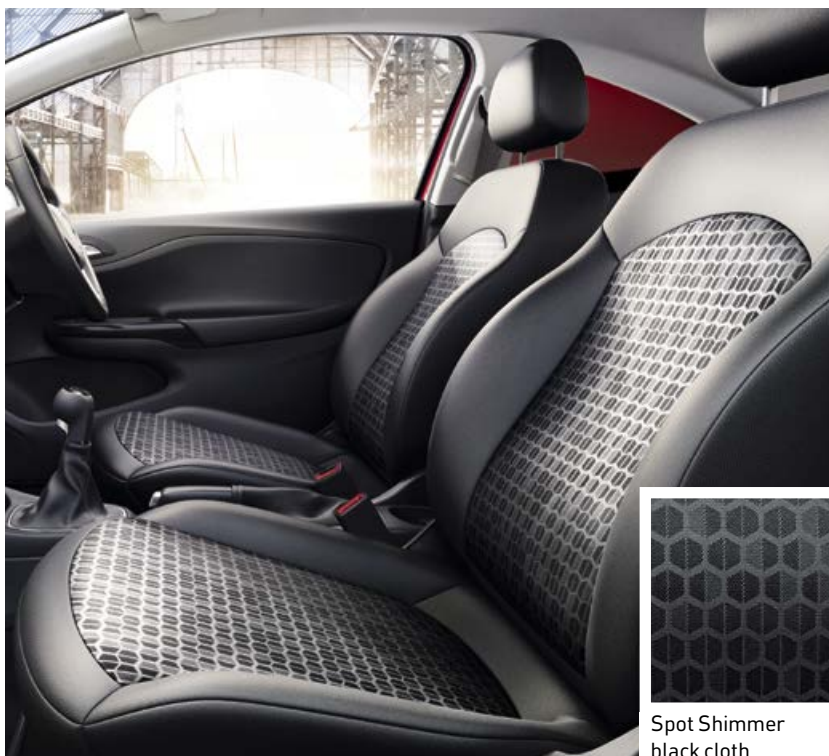
\*Optional at extra cost on Corsavan, no-cost option on Sportive models.

Due to the limitations of the printing process, the colours reproduced may vary from the actual colour. As a result they should be used as a guide only.

# INTERIOR TRIMS

A smart van interior says a lot about your business, and these durable cloth trims in black and silver work perfectly in any setting.

## SPOT SHIMMER – CORSAVAN MODELS

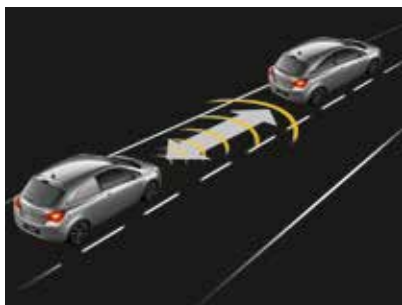


## NETWORK MOONRAY – SPORTIVE MODELS





Traffic sign recognition.



Following distance indication.



Remote control central locking with security deadlocks.

# EQUIPMENT

## SAFETY

### Standard features

**Airbags:** • Driver's dual-stage airbag • Passenger's dual-stage airbag • Deactivation switch for passenger's airbag • Side-impact airbags  
• Full-size curtain airbags

**Seating:** • Height-adjustable head restraints • Height-adjustable seatbelts • Seatbelt pretensioner system • Driver's and passenger's seatbelt force limiters – Reduces potential upper body injuries during a frontal impact • Anti-submarining ramps in all seats – Help prevent occupants sliding underneath the lap belt during a collision • Seatbelt unfastened audible warning

**Electronic:** • Electronic Stability Programme-plus (ESP-plus) with traction control – Reduces the possibility of losing control of the vehicle  
• Anti-lock Braking System (ABS) with electronic brakeforce distribution • Straight line stability control • Cornering brake control  
• Emergency brake assist • Adaptive brake lights • Drag torque control – Helps maintain stability when suddenly lifting off the accelerator  
• Tyre pressure monitoring system • Hill start assist

**Body:** • Pedal release system – Reduces potential injury to the driver's legs and feet during a severe frontal impact • Laminated windscreen  
• Reinforced passenger safety cell • Side-impact protection beams • Fuel tank located ahead of rear axle

### Additional feature

**Technical Pack** • Forward collision alert • Traffic sign recognition • Lane departure warning  
• Following distance indicator • Electro-chromatic anti-dazzle rear-view mirror

## SECURITY

**Standard features** • Remote control central locking (doors, tailgate, fuel flap) with security deadlocks • Electronic theft protection for audio equipment • Electronic engine deadlock immobiliser • 'Key left in ignition' audible warning • Visible Vehicle Identification Number (VIN)  
• Locking wheel bolts for alloy wheels (where fitted) • Door-to-door illumination

## HEATING AND VENTILATION

**Standard features** • Side window demist vents and four adjustable heating and ventilation outlets • Air blend heater with four-speed fan and illuminated controls • Interior pollen filter

### Additional features

Air conditioning (includes air recirculation facility)

Electronic climate control incorporating air conditioning

● = Standard equipment. ○ = Optional at extra cost.

1 = Only available when optional cruise control is specified. 2 = Only available in conjunction with air conditioning.

	Corsavan	Sportive
Technical Pack	○ <sup>1</sup>	○

	Corsavan	Sportive
Air conditioning (includes air recirculation facility)	○	●
Electronic climate control incorporating air conditioning	○ <sup>2</sup>	○



## FACIA, INSTRUMENTS AND CONTROLS

**Standard features** • Multi-function display panel showing time, date, audio information and outside air temperature (with ice warning function)  
 • Digital clock with automatic RDS time adjustment • Adjustable speed limit audible warning – Allows the driver to set the speed above which an alarm sounds • Steering column adjustable for reach and rake • City mode button providing lighter steering at parking speeds (deleted if Technical Pack is specified) • Shift-up indication light • Trip odometer • Rev counter • Electronically controlled fuel gauge • Low fuel level warning light  
 • Headlight/brake light bulb failure warning light • Service-due indicator • Handbrake-on warning light • Instrument panel light dimmer  
 • Glovebox with lid • Electrical accessory socket

### Additional features

**Winter Pack** • Electrically heated seats • Electrically heated leather-covered steering wheel

Cruise control with speed limiter (includes leather-covered steering wheel)

	Corsavan	Sportive
Winter Pack	○ <sup>1</sup>	○
Cruise control with speed limiter	○	●

## SEATING AND UPHOLSTERY

**Standard features** • Reclining seats • Easy-entry seats with memory function

### Additional features

Driver's seat height adjuster

Sports-style seats

Spot Shimmer black cloth seat trim

Network Moonray sliver cloth seat trim

	Corsavan	Sportive
Driver's seat height adjuster		●
Sports-style seats		●
Spot Shimmer black cloth seat trim	●	
Network Moonray sliver cloth seat trim		●

## ADDITIONAL INTERIOR FEATURES

**Standard features** • Door pockets • Chrome-effect door handles • Drinks holder in centre console • Driver's and passenger's tiltable assist handles • Dipping rear-view mirror • Twin sunvisors, driver's with vanity mirror and cover • Chrome-effect handbrake button  
 • Map reading lights

### Additional features

Chrome-effect gear knob trim

Gunpowder grey facia

Piano black facia

Electro-chromatic anti-dazzle rear-view mirror

	Corsavan	Sportive
Chrome-effect gear knob trim		●
Gunpowder grey facia	●	
Piano black facia		●
Electro-chromatic anti-dazzle rear-view mirror		●

● = Standard equipment. ○ = Optional at extra cost.



Cruise control with speed limiter.



Electrically heated leather-covered steering wheel.



Drinks holder in centre console.



IntelliLink touch-screen infotainment system.



Steering wheel mounted audio controls.



Six-speed manual gearbox (Sportive).

## AUDIO, COMMUNICATION AND NAVIGATION

### Features

**CD 30 BT CD/MP3 CD player** • Digital radio • USB connection with iPod control • Aux-in socket • AM/FM stereo radio with 36 station presets • RDS with Traffic Programme • 20 watts per channel output • 4 speakers

**IntelliLink** • Touch-screen infotainment system • Internet radio and navigation via smartphone screen scraping • Music/video playback via USB or aux-in • Music streaming via Bluetooth® • Digital radio • AM/FM stereo radio with 36 station presets • RDS with Traffic Programme • 7-inch colour touch-screen • 20 watts per channel output • 4 speakers

Bluetooth® connectivity

Steering wheel mounted audio controls

**Corsavan**

**Sportive**

●

●

○

○

●

●

●

●

## LOAD AREA

**Standard features** • Half-height steel bulkhead • Illuminated load area • Half-height plastic load lining panels • Load restraint lashing eyes • Interior tailgate handles

### Additional features

Load area rubber floor mat

Upper load restraint mesh

Cargo net

Fixing points for cargo net

Load compartment cover

**Corsavan**

**Sportive**

○

○

○

○

○

○

○

○

○

○

## MECHANICAL

**Standard features** • Front-wheel drive • Gas-pressure dampers • Front anti-roll bar • Speed-sensitive electric power-assisted steering

### Additional features

Five-speed manual gearbox

Five-speed Easytronic transmission

Six-speed manual gearbox

**Corsavan**

**Sportive**

●

○

●

● = Standard equipment. ○ = Optional at extra cost.

## EXTERIOR AND CONVENIENCE FEATURES

**Standard features** • Electrically operated windows with safety autoreverse and one-touch facility • Two-speed windscreen wipers with variable intermittent wipe • Tinted windows • Manually foldable door mirrors • Heated rear window • Intermittent rear window wash/wipe

	Corsavan	Sportive
<b>Additional features</b>		
Heated windscreen	○	●
Rain-sensitive windscreen wipers		●
Electrically adjustable door mirrors (wide-angle on driver's side)	●	
Electrically adjustable/heated door mirrors (wide-angle on driver's side)		●
Folding key		●
Rear parking distance sensors	○	○
Rear-view camera with coloured guidelines and warning signs for detected obstacles <sup>3</sup>		○



Heated windscreen.

## EXTERIOR PROTECTION AND STYLING

	Corsavan	Sportive
<b>Features</b>		
Body-colour door handles		●
Black foil on B-pillars (not with Carbon Flash, Royal Blue or Dark Sea Blue exterior colours)		●
Two-coat metallic or pearlescent paint	○	N/C



Daytime running lights.

## EXTERIOR LIGHTING

**Standard features** • Halogen headlights • Lights-on audible warning • Electric headlight beam levelling • High-level LED centre brake light • Rear fog light

	Corsavan	Sportive
<b>Additional features</b>		
Daytime running lights	●	
LED daytime running lights		●
Welcome lighting		●
Automatic lighting control		●
Front fog lights with chrome-effect surround		●

● = Standard equipment. ○ = Optional at extra cost. N/C = No-cost option.

<sup>3</sup> = Only available when rear parking distance sensors and IntelliLink are specified.



Front fog lights with chrome-effect surround.



# TECHNICAL DATA

ENGINES				
	1.2i 70PS	1.3CDTi 75PS Start/Stop	1.3CDTi 95PS Start/Stop ecoFLEX	1.3CDTi 95PS Start/Stop
Fuel type	Petrol	Diesel	Diesel	Diesel
Capacity	1229cc	1248cc	1248cc	1248cc
Maximum power	70PS (51kW) @ 5600rpm	75PS (55kW) @ 3750rpm	95PS (70kW) @ 3750rpm	95PS (70kW) @ 3750rpm
Maximum torque	115Nm (85 lb.ft.) @ 4000rpm	190Nm (140 lb.ft.) @ 1500-2500rpm	190Nm (140 lb.ft.) @ 1500-3500rpm	210Nm (155 lb.ft.) @ 1500-3000rpm
Configuration	4 cylinders, 4 valves per cylinder, double overhead camshafts			
Fuel/induction system	Naturally aspirated with Variable Valve Timing. Multi-point sequential fuel injection	Turbocharger with intercooler. Common rail fuel injection	Variable geometry turbocharger with intercooler. Common rail fuel injection	
Emission compliance	Euro 6	Euro 6 with Diesel Particulate Filter		
Service interval	20,000 miles or one-year (whichever occurs sooner)			

TRANSMISSION RATIOS								
	Gear ratios (mph/1000rpm)						Rev	Final drive ratio
	1	2	3	4	5	6		
1.2 70PS	3.91:1 (4.7)	2.14:1 (8.5)	1.41:1 (13.0)	1.12:1 (16.3)	0.89:1 (20.5)	–	3.31:1 (5.5)	3.94:1
1.3CDTi 75PS Start/Stop	3.73:1 (4.9)	2.14:1 (8.6)	1.32:1 (14.0)	0.89:1 (20.8)	0.67:1 (27.6)	–	3.31:1 (5.6)	3.94:1
1.3CDTi 95PS Start/Stop ecoFLEX	3.73:1 (5.5)	1.96:1 (10.5)	1.32:1 (15.5)	0.89:1 (23.0)	0.67:1 (30.6)	–	3.31:1 (6.2)	3.55:1
1.3CDTi 95PS Start/Stop	3.82:1 (5.1)	2.16:1 (9.0)	1.35:1 (14.5)	0.96:1 (20.4)	0.77:1 (25.4)	0.61:1 (32.0)	3.55:1 (5.5)	3.72:1
1.3CDTi 95PS Start/Stop ecoFLEX Easytronic	3.73:1 (5.1)	2.14:1 (8.8)	1.32:1 (14.3)	0.89:1 (21.2)	0.67:1 (28.2)	–	3.63:1 (5.2)	3.74:1

FUEL ECONOMY AND EMISSIONS				
	Fuel economy mpg (litres/100km)*#			CO <sub>2</sub> (g/km)*#
	Urban driving	Extra-urban driving	Combined figure	
Petrol				
1.2i 70PS	42.2 (6.7)	61.4 (4.6)	52.3 (5.4)	126
Diesel				
1.3CDTi 75PS Start/Stop	61.4 (4.6)	85.6 (3.3)	74.3 (3.8)	100
1.3CDTi 95PS Start/Stop ecoFLEX	76.3 (3.7)	94.2 (3.0)	85.6 (3.3)	87
1.3CDTi 95PS Start/Stop	62.8 (4.5)	83.1 (3.4)	74.3 (3.8)	101
1.3CDTi 95PS Start/Stop ecoFLEX Easytronic	83.1 (3.4)	94.2 (3.0)	88.3 (3.2)	84

# = Official Government Test Environmental Data. Official EU-regulated test data is provided for comparison purposes and actual performance will depend on driving style, road conditions and other non-technical factors.

### Vauxhall Assistance and Warranties\*

Every New Corsavan comes with:

- A three-year vehicle warranty consisting of a one year/unlimited mileage manufacturer's warranty and a second and third year manufacturer's warranty with a 60,000 miles limitation
- Vauxhall Assistance for 12 months from first registration
- Six years' body panel anti-perforation warranty

\* = Warranty is only available on vehicles sourced from General Motors UK Limited. Terms and conditions apply – please see your Vauxhall retailer for details.

### Transmission

- Front-wheel drive
- Five-speed manual gearbox (Corsavan models)
- Five-speed Easytronic transmission available at extra cost (1.3CDTi 95PS Corsavan ecoFLEX model)
- Six-speed manual gearbox (Sportive models)

### Start/Stop technology

New Corsavan's Start/Stop system offers real benefits by improving fuel economy and reducing CO<sub>2</sub> emissions, particularly in town. It does this by automatically stopping the engine when you come to a standstill, and then restarting as you prepare to move off.

Before automatically stopping the engine a number of system checks are carried out to ensure that it is both safe and practical to do so. To ensure safety, the driver must depress the clutch pedal, shift in to neutral, and then release the clutch pedal.

System checks carried out before Auto Stop activates include:

- Start/Stop system is not manually deactivated via the facia button
- Sufficient brake vacuum is available to prevent the car rolling down an incline
- Battery is in good condition and charged
- Outside air temperature and engine temperature are above specified minima
- Electronic climate control (where fitted) is not in maximum heating or maximum cooling mode
- Self-cleaning function of the diesel particulate filter is not active

If all of these conditions are satisfied then the vehicle will Auto Stop.

When you are ready to pull away from standstill, Auto Restart is activated by depressing the clutch pedal.

Whilst at a standstill the vehicle is continually monitored. If necessary, the engine will automatically be restarted. Conditions that would initiate an Auto Restart include:

- Low battery level
- Brake vacuum below specified minimum
- Start/Stop system is manually deactivated
- Stationary for 5.5 minutes

### Steering

- Rack and pinion
- Speed-sensitive electric power-assisted steering standard on all models – variable rate on diesel models
- Turning circle (kerb-to-to-kerb): All models 10.6m (34.8ft.)

### Electronic stability

- Electronic Stability Programme (ESP-plus)
- Traction control
- Straight line stability control
- Cornering brake control

### Suspension

**Front:** Independent. Lightweight MacPherson struts with gas-pressure dampers and coil springs. Anti-roll bar.

**Rear:** Compound crank with coil springs and gas-pressure dampers.

### Electrics

**Alternator:**

1.2i 130A  
1.3CDTi 140A

**Maintenance-free battery:**

1.2i 40Ah  
1.3CDTi 60Ah

### Brakes

- Anti-lock Braking System (ABS)
- Electronic brakeforce distribution
- Hill start assist
- Emergency brake assist
- Dual circuit, diagonally split, dual rate servo-assisted system
- Low brake fluid level warning light

#### 1.2i 70PS

Front ventilated discs: 257mm diameter  
Rear drums: 228mm diameter

#### 1.3CDTi 75PS

Front ventilated discs: 284mm diameter  
Rear drums: 228mm diameter

#### 1.3CDTi 95PS ecoFLEX

Front ventilated discs: 284mm diameter  
Rear drums: 228mm diameter

### Body

- Aerodynamic drag co-efficient: Cd 0.33




### Fuel tank capacity

- 45 litres (9.9 gallons)

### Wheels and tyres

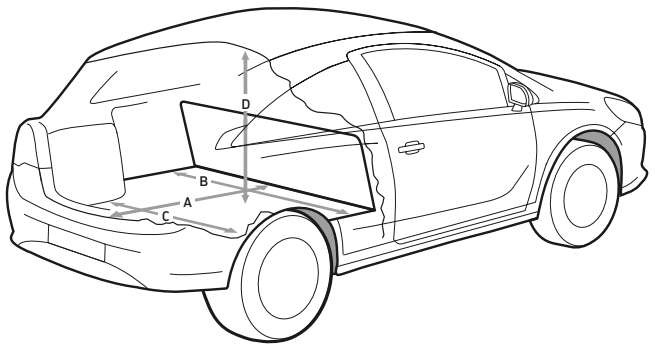
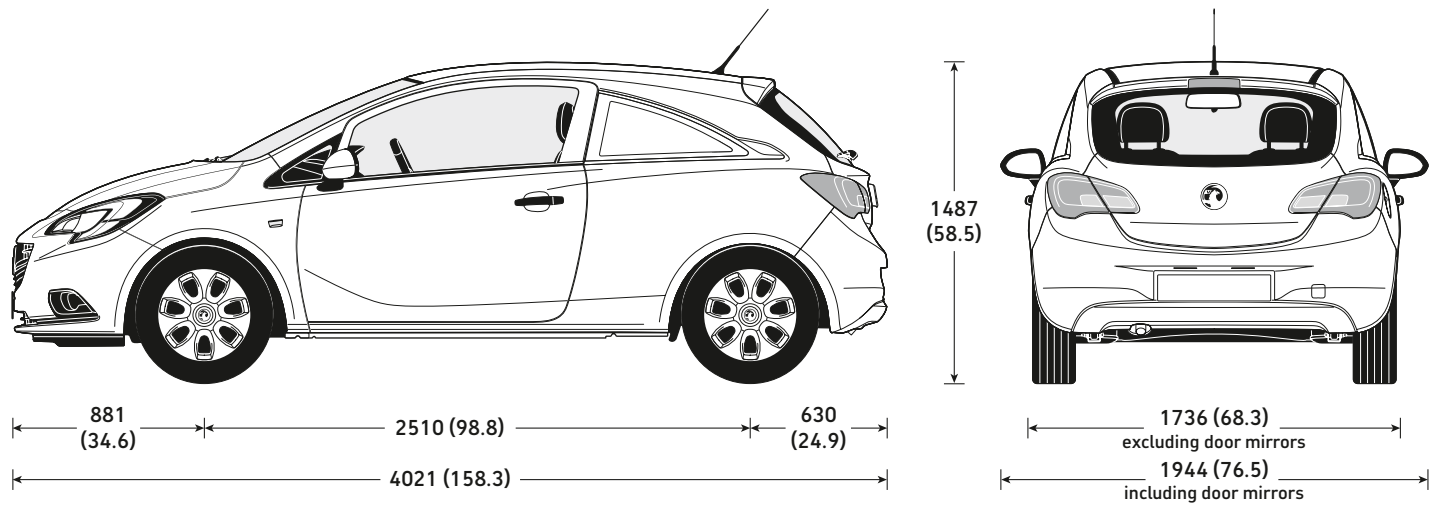
- 14-inch steel wheels with flush covers and 185/70 R 14 tyres (petrol models)
- 15-inch steel wheels with flush covers and 185/65 R 15 tyres (diesel models)
- 16-inch alloy wheels and 195/55 R 16 tyres (Sportive models)
- Full-size steel spare wheel (Corsavan)
- Steel space-saver spare wheel (Sportive)

### TYRE RATINGS

Tyre size	Fuel efficiency group	Wet grip performance	External noise	
			Measured (dB)	Group
185/70 R 14	B	B	70	
185/65 R 15	B-C	B	69-70	
195/55 R 16	B-C	B	68-71	

Tyre rating according to EU Regulation 1222/2009

**DIMENSIONS** mm (inches). Height shown unladen.



INTERIOR DIMENSIONS		mm (inches)
Loadspace		
Maximum length <b>(A)</b>		1257 (49.5)
Maximum width <b>(B)</b>		1264 (49.8)
Width between wheel arches <b>(C)</b>		969 (38.1)
Maximum height <b>(D)</b>		921 (36.2)
Rear tailgate		
Aperture height		650 (25.6)
Aperture width (at floor)		771 (30.3)
Cargo compartment to ground (unladen)		532 (20.9)
LOADSPACE VOLUME		cu.m (cu.ft.)
All models		0.92 (32.5)



## WEIGHTS AND TOWING DATA

Model	Plated weights and kerbweights kg				Payload kg	Towing weights Trailer with brakes (without brakes) kg	Plated Gross Combination Weights (GCW) kg
	Front axle Plated	Rear axle Plated	GVW Total	Kerb			
1.2i 70PS	815	820	1605	1045	560	950 (540)	2555
1.3CDTi 75PS	905	820	1695	1124	571	1200 (580)	2895
1.3CDTi 95PS ecoFLEX	905	820	1695	1124	571	1250 (580)	2945
1.3CDTi 95PS	930	820	1720	1177	543	1250 (600)	2970
1.3CDTi 95PS ecoFLEX Easytronic	915	820	1705	1124	581	1250 (580)	2955

**Note: Kerbweights** are minimum vehicle kerbweight according to European Type Approval and include all fluids, tools and a 90% fuel load. They will vary according to the vehicle specification (including options and accessories) will a corresponding variation in payload. Kerbweights are also subject to manufacturing tolerances. **Payload** figures do not allow for the weight of the driver, or any passengers, which should therefore be deducted from the figures shown. **Gross plated weights** (including axle weights) quoted on the vehicle plate are to UK plated weight specification and must never be exceeded. **Roof load** should not exceed 75kg.

## GLOSSARY OF TERMS

### Plated weight

The maximum weight to which a vehicle or an axle may be loaded, determined either by the design of the components or by legislation. All commercial vehicles must carry a manufacturer's 'plate' showing the vehicle and axle gross 'plated weights'. It is an offence to drive a vehicle in a condition where any of these weights are exceeded.

### Kerbweight

The weight of the complete vehicle in standard form, excluding payload and driver but including coolant, oil, 90% full fuel tank and spare wheel where fitted. Kerbweights quoted in Vauxhall brochures are subject to manufacturing tolerances and to the fitment of optional equipment and accessories. Where load capacity is critical the actual kerbweight should be obtained by weighing the vehicle on a calibrated public weighbridge

### Gross Vehicle Weight (GVW)

The total permissible weight of a vehicle including payload and passengers, as shown on the manufacturer's plate.

### Gross Combination Weight (GCW)

The maximum permissible weight of a vehicle, including payload and passengers, combined with the total weight of any trailer it is towing. The maximum GCW weight limit is quoted on the vehicle plate and must not be exceeded.

### Payload

The total permissible weight that can be carried without exceeding the vehicle's plated weight. This can be obtained by deducting the kerbweight from the plated GVW. Please note: the payload figure does not allow for the weight of the driver or any passengers which should therefore be deducted from the figures shown and are also subject to correct weight distribution.

### Maximum towing weight

The maximum weight of any trailer and its load which may be towed within the limit of the vehicle's plated GCW. It is based on the ability of the vehicle – at full GCW – to restart on a 12% gradient, which is approximately 1 in 8.3, at sea level. At altitudes above 1500 metres, the engine output may drop with a corresponding reduction in towing capability. It is the operator's responsibility to ensure that the trailer noseweight does not cause the rear axle plated weight of the towing vehicle to be exceeded.

*Always fit Vauxhall towing attachments and accessories available from your Vauxhall Commercial Vehicle retailer. They are designed specifically for Vauxhall models and carry a 12-month warranty.*

# Trust Vauxhall

## Protecting the environment

Vauxhall's commitment to the environment is demonstrated by our products' many environmental awards, won both through the use of more recycled materials and by becoming cleaner and more efficient. For information on Vauxhall's efforts to achieve an environmentally sustainable future, see [www.vauxhall.co.uk/recycling](http://www.vauxhall.co.uk/recycling)

## Fleet Customer Services

Our dedicated support services for fleet managers include factory demonstrators and information on whole life costs, company car and van taxation and finance. For further information please call **0870 010 0651**.

## Vauxhall Extended Warranty

For complete peace of mind Vauxhall offers an extended warranty that can be purchased on an annual basis following the expiry of the original new vehicle warranty. It covers most mechanical and electrical components. Terms and conditions apply. For further details please contact your local Vauxhall Commercial Vehicle retailer.



When you have finished with this brochure please recycle it

## Business Lease

Business Lease, from GMAC, offers the versatility of a purchase-based finance plan, while making the most efficient use of tax and cash-flow benefits for VAT-registered business users. It's available for all Vauxhall Commercial Vehicles up to 12 months old and offers highly flexible term lengths, variable deposits and a choice of payment profiles. Ask your retailer for full details.

## Business First

Available to business users only, Business First enables you to drive a new vehicle without a large, initial financial outlay. You pay to use the vehicle, not to own it. The vehicle is provided over a predetermined period, and when that period comes to an end the vehicle is returned. Ask your retailer for full details.

## Servicing and maintenance

The best way to maximise the performance and reliability of your Vauxhall is to have all routine servicing and maintenance carried out at a Vauxhall Commercial Vehicle retailer. Nationwide there are over 250 light commercial vehicle retailers and a further 195 heavy commercial vehicle retailers.

## In the event of an accident...

Vauxhall Accident Support helps keep you mobile following an accident. Benefits include scene-of-accident advice, message service, assistance with claims and vehicle recovery. For further details call **0800 010 304**.

## Premier Van Centres

Our 100-strong network offers convenience, expertise and value. Enjoy while-you-wait repairs (if the parts are in stock), appointment-free service for diagnosis and transparent pricing. What's more, our Vauxhall-trained technicians will use genuine Vauxhall parts.

## For more information...

For a brochure on any Vauxhall model (up to a maximum of three per caller) or location of your nearest retailer, call **0345 600 1500**.

Alternatively, details can be found on our website at: [www.vauxhall.co.uk/vans](http://www.vauxhall.co.uk/vans)

Proud Sponsor of Home Nations Football



Every effort has been made to ensure that the contents of this publication were accurate and up-to-date at the time of going to press (September 2015). Vauxhall vehicles are equipped with components manufactured by various General Motors operating units and outside suppliers. The Company reserves the right to alter specifications and withdraw products from sale without notice. Any such alterations will be notified to Vauxhall retailers at the earliest opportunity; please consult your local retailer for the latest information. The specifications detailed within this brochure are not necessarily applicable to alternative models such as Special Editions. Details of any such models will be contained in specific literature or found on the Vauxhall website. Please note that Vauxhall retailers are not the agents of General Motors UK Limited and are not authorised to bind the Company by any specific or implied undertaking or representation. It is advisable to ensure that your motor insurance policy provides adequate cover for additional fitted options and accessories. Please note accessories shown are for illustrative purposes only. As part of Vauxhall's policy of environmental care, this brochure is printed on paper manufactured using Elemental Chlorine Free pulps from specially farmed, sustainable timber resources. All rights reserved. No part of this publication may be reproduced in any form or by any means, without the prior written permission of General Motors UK Limited.

LT00150451

©2015 General Motors UK Limited

Published September 2015

General Motors UK Limited, Luton LU1 3YT

**COMMERCIAL VEHICLES**  
*The Wheels of Business*



**VAUXHALL**